



An ISO 9001-2015 Certified Company
**Manufacturer, Designer & Exporters of Process
Industrial Valves, Filters, Strainers &
Pneumatic Automation.**

CE
IBR



www.fluidomech.com

Email : info@fluidomech.com / sales@fluidomech.com

Gate Valves



Manufacturing Standard:
API 600, API 6D

Inspection & Testing:
API 598

Material of Construction:
Cast Iron /WCB/WC5/WC6/WC9/
CF8 / CF8M / CF3 / CF3M
4A/5A & other special exotic Alloys.

End Connections:
Screwed to BSP / BSPT / NPT
Socketed Weld / Butt Weld Ends
Flanged Ends / RTJ END

Pressure Rating:
125#/150#/300#/600#/900#/1500#/2500#

Operation:
Manual / Gear, Electrical Actuated and
Pneumatic Actuator Operated

Size Range:
25mm to 1000mm



Globe Valves



Type of Valves:
S-Pattern & Straight Pattern

Manufacturing Standard:
BS 1873 / DIN 1868 / ASME B16.34

Inspection & Testing:
BS 6755/ API 598

Material of Construction:
Cast Iron /WCB/WC5/WC6/WC9/CF8 / CF8M / CF3 /
CF3M / 4A/5A & other special exotic Alloys.

End Connections:
Screwed to BSP / BSPT / NPT Socketed Weld /
Butt Weld Ends / Flanged Ends / RTJ END

Pressure Rating:
125# / 150# / 300# / 600# / 900# / 1500# / 2500# / PN 16 /
PN 40 / PN 64

Operation:
Manual / Gear, Electrical Actuated and
Pneumatic Actuator Operated

Size Range:
15mm to 1000mm

Check Valve

Swing Type



Type of Valves:
Swing Type / Lift Type, Non-Slam
And High Pressure NRV (Special Design)

Manufacturing Standard:
BS 1868 / API 6D

Inspection & Testing:
BS 6755/ API 598

Material of Construction:
Cast Iron /WCB/WC5/WC6/WC9/
CF8 / CF8M / CF3 / CF3M
4A/5A & other special exotic Alloys.

End Connections:
Screwed to BSP / BSPT / NPT
Socketed Weld / Butt Weld Ends
Flanged Ends / RTJ END

Pressure Rating:
ASA 125# / 150#/300#600#/900#
1500#/2500# / PN 16 / PN 40 / PN 64

Size Range:
15mm to 1000mm

Wafer Type / DCV & DPCV

Check Valves



Type of Valves:
Dual Plate, Disc type, WaferType check valves

Manufacturing Standard:
API 6D / API 594

Inspection & Testing:
API 598/API 594

Material of Construction:
C.I/M.S/SS 304 / SS 316
WCB/CF8 / CF8M/CF3/CF3M/4A/5A

End Connections:
Wafer Type / Flanged End

Pressure Rating:
ASA 125# / 150#/300#/600#/900#
PN-16/PN-40 and PN-64.

Size Range:
25mm to 900mm

Butterfly Valves



Manufacturing Standard:
API 609 / BS 5155 / IS 13095/ AWWA

Inspection & Testing:
BS 6755 / AWWA

Material of Construction:
Body: Cast Iron / WCB / CF8/CF8M/CF3/CF3M
(Also Available in Fabricated material / Type)
Seat: Nitrile/Neoprene/PTFE/Viton
Hypalon/Silicon, Metal to Metal

End Connections:
Wafer Type/Double Flanged/Lug End

Type:
Centric Disc Design/offset Disc Design High Performance

Pressure Rating:
125# / 150#/PN 1.0/PN 1.6
PN 2.0/PN 2.5/PN10/PN16

Operation:
Lever/ Gear/ Electrical Actuator
Pneumatic Actuator and Hydraulic Actuator

Size Range:
25mm to 2000mm

Ball Valves

Type of Valves: 1Pc./2Pc./3Pc./Three Way/Four Way And (2Pc.& 3Pc. Trunion Mounted)

Manufacturing Standard:
API 6D / BS 5351 / BS 5159

Inspection & Testing:
BS 6755/ API 598

Material of Construction:
Cast Iron /WCB/WC5/WC6/WC9/
CF8 / CF8M / CF3 / CF3M
4A/5A & other special exotic Alloys.

Seat Seals:
PTFE/RPTFE/GFT/PEEK/Metal to Metal

End Connections:
Screwed to BSP / BSPT / NPT
Socketed Weld / Butt Weld with extended Nipple
Flanged Ends / Butt Weld Ends/FF/RF/RTJ.

Pressure Rating:
125# / 150#/300#600#/900# /1500#/2500#

Operation:
Lever / Gear/ Electrical Actuator
Pneumatic Rotary Actuator

Size Range:
8mm to 1000mm



Note :- Also Available in RB/FB/L Port/ T Port

Forge Steel Valves



Type of Valve:
Gate, Globe, Check (Lift Type) Ball Valve, "Y" Type Strainer

Manufacturing Standard:
API 602 / BS 5352

Inspection & Testing:
API 598 / BS 6755 Part I

Material of Construction:
ASTM A 105 / F 304 / F 316
F 316L / F11 / F22 / LF 2, F51,
& Other Sp. Forged Grades.

End Connections:
Screwed to BSP / BSPT / NPT
Socketed Weld / Butt Weld/
Flanged Ends (Fabricated)

Pressure Rating:
ASA 800# / 1500# / 2500# / 4500#

Type:
Straight Pattern and "Y" Type Pattern

Size Range:
15mm to 50mm



Plug Valves



Manufacturing Standard:
API 599/API 6D/ BS 5353

Inspection & Testing:
API 598& EN 12266-1

Material of Construction:
Cast Iron /WCB/WC5/WC6/WC9/
CF8 / CF8M / CF3 / CF3M
4A/5A & other special exotic Alloys

End Connections:
Flanged/Butt Weld End

Type:
PTFE Sleeve/Lubricated/Self Lubricated
Top & Bottom Entry

Pressure Rating:
125#/150#/300#/600#/PN-10/PN-16.

Size Range:
25mm to 450mm

Diaphragm Valves



Manufacturing Standard:
BS-5156

Inspection & Testing:
BS-6755 PART-I

Material of Construction:
Cast Iron /WCB/WC5/WC6/WC9/
CF8 / CF8M / CF3 / CF3M
4A/5A & other special exotic Alloy

End Connections:
Flanged Ends and Butt Weld

Pressure Rating:
ASA 150#/PN 10/PN 16

Size Range:
25mm to 450mm

Air Release Valves



Manufacturing Standard:
IS 14845

Inspection & Testing:
IS 14845

Material of Construction:
CAST IRON / CARBON STEEL & GUN MATEL

End Connections:
Screwed Ends/Flanged Ends (RF/FF)

Type:
Single Acting / Double Acting
Kinetic type isolated

Pressure Rating:
ASA 125#/150#/300#/PN 1.6/PN10/PN16

Size Range:
25mm to 600mm

Safety Valves



Manufacturing Standard:
API 526 / As Per Customer Requirement.

Inspection & Testing:
As Per Requirement.

Material of Construction:
WCB/WC5/WC6/WC9/
CF8 / CF8M / CF3 / CF3M
4A/5A & other special exotic Alloys.

End Connections:
Flanged Ends, Screwed Ends.

Type:
Ordinary Lift Type/High Lift Type
Full Lift Type

Pressure Rating:
150#/300#/PN 40
As Per Requirement

Size Range:
25mm to 200mm

Strainers



Manufacturing Standard:
Mfg. Standard

Inspection & Testing:
Mfg. Standard

Material of Construction:
Cast Iron/ WCB/ MS / CF8 / CF8M / CF3 / CF3M/4A/5A
& other special exotic Alloys
Mesh: SS 304/SS 316and Other Special Grades.

End Connections:
Screwed to BSP / BSPT / NPT
Socketed Weld /Flanged Ends
Butt Weld Ends. / Type of Valves:
"Y" Type/"T" Type/Pot Type / Basket Type

Pressure Rating:
ASA 125#/150#/300#/600#/900#
PN-10/PN-16/ND-40& PN-64

Size Range:
15mm to 800mm

Sight Glass

Tube Glass

Needle Valves



Manufacturing Standard:
Mfg. Standard
Inspection & Testing:
Mfg. Standard
Material of Construction:
Cast Iron /WCB/WC5/WC6/WC9/
CF8 / CF8M / CF3 / CF3M
4A/5A & other special exotic Alloys.
End Connections:
Flanged Ends / Wafer / Screwed
Pressure Rating:
PN 6/PN 10/PN 16/ASA 150#
Size Range:
15mm to 200mm

Manufacturing Standard:
As Per Requirement
Inspection & Testing:
As Per Requirement
Material of Construction:
AISI 304/AISI 316
AISI 304L/AISI 316L& Duplex.
End Connections:
Screwed to BSP/BSPT/NPT
Socket Weld to ANSI B 16.11
Butt Weld. / Tube End
Pressure Rating:
3000 PSIG to 10,000 PSIG
Size Range:
15mm to 50mm



Steam Traps

Bronze Valves

GUN Metal



Manufacturing Standard:
IS 12268 / TD3 / Flanged
Inspection & Testing:
As per Requirement
Material of Construction:
Cast Iron/CA 15/CF8/CF8M
A 105/F11/F22
End Connections:
Screwed to BSP/BSPT/NPT
Socket Weld to ANSI B 16.11
Pressure Rating:
ASA 800#/1500#/2500#
Max Inlet Pressure:
10Kg/cm2/30Kg/cm2/
248Kg/cm2/AT 204 °C
Size Range:
15mm to 25mm - TD-3
15mm to 50mm – Float & Bucket Type

Type of Valves: Gate/Globe/Check/Ball Valve/SRV/PRV/NRV/Horizontal NRV

Manufacturing Standard:
IS 778 CL-I / Mfg. Standard
Inspection & Testing:
IS: 318 Gr. LTB2
And As Per Customer Requirement
End Connections:
Screwed to BSP/BSPT/NPT
Socket Weld and Flanged Ends.
Size Range:
15mm to 200mm



Lined Valves

Type of Valves: Ball Valve/Ball Check Valve
Diaphragm/Sight Glass/Butterfly/Plug Valve/Gate Valve & Globe Valves.



Manufacturing Standard:
BS-5351/BS-5156/IS-2062/API 609/API 6D/API 600.
Inspection & Testing:
API 598/API 6D/IS-2062
Material of Construction:
S G Iron/Cast Iron/WCB/ CF8/CF8M/CF3/CF3M
Lining Material:
PFA/FEP/PTFE/PVDF and Rubber.
End Connections:
Wafer/Lugged End Type For Butterfly & Flanged Ends
Pressure Rating:
ASA 125#/150#/PN-1.6 and PN-10.
Size Range:
15mm to 200mm



M/s., NUTECH APPLICATOR
A Joint Venture of
FLUID-O-MECH CONTROL'S INC.

AUTOMATION VALVES



Steam Solenoid Valve 2/2 way Direct Acting



Model : FMCI - DA
Size Range : 1/4" to 1"
Body : Brass Forged
Ends : Screwed & BSP
Pressure : Upto 8Kg / Cm
Temp. : 150 C Max.
Media : Steam
Available Volt. :
 All std. Voltage available

Dust Collector Solenoid Valve Pulse Valve



Model : FMCI - DV
Size Range : 1/2" to 3"
Body : Aluminum Die Cast / BRASS
Diaphragm : Neoprene / Nitrile / PU
Pressure : 0.6 to 10 Bar
Temp. : 80 C Max.
 (Upto 125 C on Request)
Available Volt. :
 All std. Voltage available

Diaphragm Operated Solenoid Valve



Model : FMCI - DO
Size Range : 1/2" to 1"
Body : Cf8 / CF8M
Diaphragm : Nitrile
Ends : Screwed
Pressure : 0 to 6 Kg / Cm
Temp. : 80 C Max.
Media : Air, Water, Oil & Gas
Available Volt. :
 All std. Voltage available

3-4 way Electrical Actuator Ball Valve



Model : FMCI - BLVACT
Electrical Actuator
Material : Aluminum Alloy / Nylon
System Design : Gear Motor
Casting Protection : IP 67
Working Temp. : CF8 60 C
Valve
Size : 1/2" to 10" (Full / Reduce Bore)
Body : ASTM A216 Gr. WCB / ASTM A351 Gr. CF8 - CF8M
Diaphragm : Nitrile
Temp. : -20 C to 180 C
Ends : Screwed / Flanged / Socket Weld / Triclover

Electrical Actuator Butterfly Valve (Eco-Tech)



Model : FMCI - ELBF
Electrical Actuator
Material : Aluminum Alloy / Nylon
System Design : Gear Motor
Casting Protection : IP 67
Working Temp. : Upto 60 C
Valve
Size : 1.1/2" to 24"
Body : CI (IS 210 Gr. FG 200 / 220)
Body Type : Short wafer (Sandwiched Between Flanges)
Seat Type : Integrally Moulded with the body
Pressure Rating : PN 10 (max.) / PN 16 Available on Req.
Oper. Temp. range : -25 C to 130 C (depending on MOC)

2 way Electrical Actuator Ball Valve



Model : FMCI - BLVEL
Electrical Actuator
Material : Aluminum Alloy / Nylon
System Design : Gear Motor
Casting Protection : IP 67
Working Temp. : Upto 60 C
Valve
Size : 1/2" to 10"
Body : ASTM A216 Gr. WCB / ASTM A351 GR. CF8 - CF8M
Temp. : -20 C to 180 C (High temp. on Req.)
Ends : Screwed / Flanged / Socket Weld / Triclover

Round Body Midget Type Pneumatic Cylinder Single / Double Acting



Bore Size : 12, 16, 20 & 50mm
Stroke : Upto 1000mm
End Cover : Aluminum
Barrel : Aluminum / Brass
Seals : Buna - N
Piston : Brass / Aluminum
Piston Rod : EN 8 / S. Steel
Pressure : Upto 12 Bar
Temp. : 85 C Max.
Media : Air & Gas

ISO 6431 & CETOP Pneumatic Cylinder Single / Double Acting



Model : FMCI - 150
Bore Size : 32mm to 160mm
Stroke : Upto 2500mm
End Cover : Aluminum
Barrel : Aluminum / Brass
Seals : Buna - N
Piston : C.I. / M.S.
Piston Rod : EN 8 / S. Steel
Pressure : Upto 12 Bar
Temp. : 85 C Max.
Media : Air & Gas

Heavy Duty Pneumatic Cylinder Pneumatic Cylinder Single / Double Acting



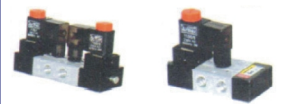
Model : FRM / RMS
Bore Size : 25mm to 450mm
Stroke : Upto 2500mm
End Cover : Aluminum / C.I.
Barrel : Aluminum / S. Steel
Seals : Buna - N
Piston : C.I. / M.S.
Piston Rod : EN 8 / S. Steel
Pressure : Upto 12 Bar
Temp. : 85 C Max.
Media : Air & Gas

Solenoid Valve 2/2 & 3/2 Direct Acting



Model : FARMMA / FBSD
Size : 1/4" & 1/2" BSP / NPTI
Pressure : Upto 10 Kg / CM
(40Kg / CM, 60Kg / CM on Req.)
Media :
 Air, Gas, Water, Oil & Steam
Coil : All std. Voltage Available

Solenoid Valve 3/2, 5/2 & 5/3 Single / Double



Model : FARMSS / FARMDS
Size : 1/4" & 1/2" BSP / NPTI
Pressure : Upto 10 Kg / CM
Media : Air
Coil : All std. Voltage Available

Knife Edge Gate Valves



Manufacturing Standard:
MSS SP-81

Inspection & Testing:
S SP-81

Material of Construction:
Cast Iron, Carbon Steel/ SS 304, SS 316
SS 304L/SS 316L and Other Alloys.

End Connections:
Flange Type, Two Lugs, Full Lugs,
Wafer Type, Flange End

Pressure Rating:
150#/300#

Operation:
Manual / Gear, Electrical Actuated and
Pneumatic Actuator Operated

Size Range:
50mm to 1000mm



Pressure reducing Valves

Manufacturing Standard:
confirms to Fluid-O-Mech Controls INC.

Inspection & Testing:
As per customer requirement

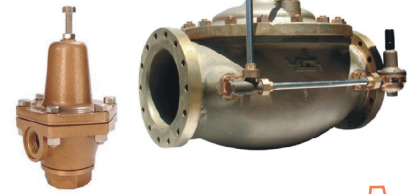
Material of Construction:
Carbon Steel/ SS 304, SS 316
SS 304L/SS 316L, Brass,
Gunmetal, & Other Alloys.

End Connections:
Flange End RF/FF(150#/300#/600#)
Screwed

Pressure & Temperature Rating:
Maximum Inlet Pressure: 3500PSI
Maximum operating Temp: 350°C
Percentage of Pressure reducing: 85%

Type:
Self, spring return, diaphragm, set Screwed
and pilot operated type.

Size Range:
10 mm to 350mm



Control Valves



Manufacturing Standard:
confirms to Fluid-O-Mech Controls INC.
ASME B 16.34 / API 598

Inspection & Testing:
As per customer requirement

Seal leakage test Standard:
FCI-10-2/ISA-RP-39.6

Face to Face:
ISA-S 75.03/ASME B16.10

End :
ASME B16.58 / BS 1560

Material of Construction:
Carbon Steel/ SS 304, SS 316
SS 304L/SS 316L, Brass, Gunmetal,
And Other Alloys.

End Connections:
Flange End RF/FF(150#/300#/600#)
Screwed

Type:
2 Way, 3 Way, motorized, self,
spring return, Diaphragm, set Screwed,
Pneumatic and pilot operated type.

Size Range:
25 mm to 600mm

Industrial Metallic Gaskets

Types of Gasket:
Spiral Wound Gasket & Ring Type Joint (RTJ)

Manufacturing Standard:
ASME B16.20/API 6A

Inspection & Testing:
ASME B16.20/API 6A

Material of Construction:
Carbon Steel/Stainless Steel/Low Carbon Steel Soft Iron
Grades such as 316/316L/304/304L/321/347/Monel
Inconel/Incoloy/Hast Alloy/Nickel/Titanium/etc.

Filler Material:
Graphite/Non-Asbestos/PTFE/Ceramic/Mica.

Pressure Rating:
125PSI to 10000 PSI

Type:
SW/SWI/SWC/SWCI/SWR

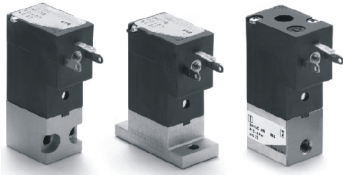
Size Range:
15mm to 1500mm





3/2 & 5/2 Puppet Type

Solenoid Valve



Model : FMCI - ZC
Size : 1/2", 3/4" & 1" BSP / NPT
Pressure : Upto 10Kg / Cm
Media : Air
Available Volt. : All std. Voltage available



3/2 & 5/2 Push Pull

& Push Button Valve



Model : FMCI - FA
Size : 1/8", 1/4" & 1/2" BSP / NPT
Pressure : Upto 10Kg / Cm
Media : Air



F + R + L Set

(Filter+Regulator+Lubricator)



Model : FMCI - DA
Body : Aluminum Press. Die Cast
Size : 1/2" & 1/4"
Bowl : Polycarbonate with Metal Guard
Element : 25 Micron
Oper.Press. : Upto 10 Kg/CM



Oil Removal Filter with Imported Cartridge



Model : FMCI - HA
Size : 1/2", 3/4", 1", 1.1/2" & 2" BSP / NPT
Body : Aluminum Die Cast
Pressure : Upto 10Kg/CM
Media : Air



2/2 & 3/2 Way

Direct Acting Solenoid Valve



Model : AMV 2V 025-08 / AMV 3V1-06
Acting Mode : Direct Type
Working Pressure : 0-8 Kg/CM
Working Temperature : -5 ~ 60 C
Port Size : 2.5mm
Voltage Range : 230V AC, 110V AC, 24V AC, 24V DC
Electricity Consuming : AC220V:2.0VA DC24V:3.0W
Protective Class : IP65 (DIN40050)
Max Acting Frequency : Ten times per second
Insulativity : F
Shortest Excitation Time : 0.05 Sec.



An ISO 9001:2015 Certified Company

(Detent / Spring Return)

3/2 ,5/2 & 5/3 Hand Lever Valve



Model : FMCI - CA
Size : 1/4" & 1/2" BSP / NPT
Pressure : Upto 10Kg / Cm
Media : Air



Roto Seal Coupling

(Right / Left Handed Thread)

Model : FMCI - JA
Size : 1/4", 3/8", 1/2", 3/4", 1", 1.1/2" & 2" BSP / NPT
Body : Aluminum / S.Steel / WCB
Shaft : Stainless Steel
Pressure : Upto 10Kg / Cm
Media : Air, Water, Oil & Gas



High Flow Regulator

Model : FMCI - GA
Size : 2.1/2", 3" & 4" Screwed / Flanged
Body : S. Steel Fabricated
Pressure : Upto 12Kg / Cm
Media : Air & Gas



Moisture Separators

(99.99% Effi. with Imported Cartridge)

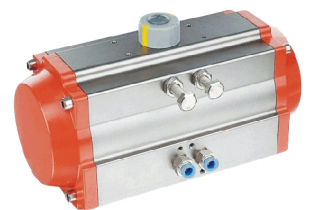
Size : 1/4" to 6" BSP / NPT / Flanged
Body : M. Steel / Aluminum
Pressure : Upto 10Kg/CM , 24Kg/CM
Media : Air, Gas & Steam
Drain Facility : Manual / Automatic with Metal Bowl & Indicator



ISO 5211

Pneumatic Actuator

Design : ISO 5211
Actuator : Single & Double Acting
Type : Double Rack & Pinion
Mounting : Namur
Rotation Angle : 90° to 180°
Body : Extruded Aluminum Pipe
Seals : Nitrile / Buna-N
Pressure : 15 to 150 PSI
Temperature : -20°C & 90°C
Torque : Upto 4500Nm at 5Kg/cm² (Pneumatic Press.)





Flanges & Pipe Fittings

Material of Construction:

MS/A105/AISI 304/304L/316/316L

Rating:

ASA 150# to 2500# /ND-16/ND-40
BS 10 TABLE E/D/F/K/J / JIS/DIN

Size Range:

15mm to 1200mm

Fittings:-

Carbon Steel (MS) Seamless Bends

Long Radius

MS (Carbon Steel) Elbows

Long Radius

MS (Carbon Steel) Concentric Reducers

Fasteners:-

MS (Carbon Steel) SS 202/304/316 High Tension



An ISO 9001-2015 Certified Company

Manufacturer, Designer & Exporters of Process
Industrial Valves, Filters, Strainers &
Pneumatic Automation.

FLUID-O-MECH CONTROL'S INC

REGISTERED OFFICE : Plot No-2, Shayona Ind. Estate, Nr. Panchratna Ind. Estate,
Vatva GIDC Phase IV, Ahmedabad - 382445. Gujarat, INDIA.

FACTORY : Plot No.:14/1A, Panchratna Industrial Estate, Nr. Ramol Bridge,
Vatva GIDC, Ahmedabad - 382445. Gujarat, INDIA.

M.+91 99048 05889, +91 98981 71027

www.fluidomech.com

Email : info@fluidomech.com / sales@fluidomech.com